



Marksman™ Series Filter Housings

For Use With Marksman Series Filter Elements

- One, Four, Seven and Nine Around Models Available
- Other Sizes Available Upon Request
- ASME U and UM Stamps Available For All Sizes
- Housings Constructed of 316L Stainless Steel For Corrosion Resistance
- Baskets Included
- Swing Bolt Closure Design Ensures Secure Sealing and Easy Change Out
- Adjustable Length Legs And Side In/Out Flow Design On Single Element Housing Button
- Side In/Side Out Flow Design On Multi-Around Housing Allows For Easy Piping Layout

Housing Specifications

Maximum Operating Pressure:

Stainless Steel: 150 psig (10.3 bar) @200°F (93°C)

NOTE: Maximum operating pressure ratings are vessel ratings only. Safe operating temperature and pressure will depend on filter cartridge and gasket used. For inquiries on compatibility, contact the factory or your Pall distributor.

Construction:

Non-Code: Available for all sizes
Code: ASME U or UM stamp available for all sizes

Connections:

Inlet/Outlet: 2" – 8" Flange
Option: 2" NPT for 1-Around, Size #1 Model
Drain¹: 1 1/2" NPT
Vent: 1" NPT (1/4" NPT on single housing)
Gauge¹: 1/4" NPT (Upstream/Downstream)

Shell O-rings: Nitrile (standard), Silicone Elastomer, Neoprene, Ethylene Propylene, Fluorocarbon Elastomer,



Filter Element Specifications

Marksman housings are designed to accept the entire family of Marksman filter elements, including Marksman Duo-Fine® filters, Marksman NEXIS® A Filters, Marksman Poly-Fine® II Filters, Marksman Poly-Fine XLD Filters. Size 1, Size 2, and 40" (102 cm) cartridges are available with our proprietary sliding flange. Refer to individual data sheets for detailed information on Marksman Series filter elements.

¹ - Applies to multi-around housing only.

Dimensional Data (nominal)³

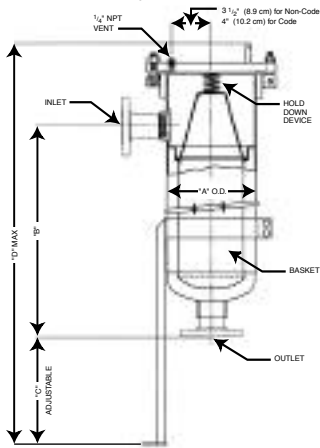
Model	Number of Cartridges	Size (nominal)	Code	Liquid Flow Rate ⁴ (gpm)	Dimensions (inches)							Inlet/Outlet	Dry Weight (pounds) ⁵
					A	B	C	D (height)	E	F	G		
1MAR1	1	1	N	60 (227 lpm)	8 1/2 (21.6 cm)	21 1/2 (54.6 cm)	12 1/2 (31.8 cm)	43 (109 cm)	10 (25.4 cm)	N/A	11 7/8 (30.2 cm)	2 (5.1 cm)	77 (35 kg)
1MAR2	1	2	N	120 (454 lpm)	8 1/2 (21.6 cm)	35 (89 cm)	12 1/2 (31.8 cm)	57 (145 cm)	10 (25.4 cm)	N/A	11 7/8 (30.2 cm)	3 (7.6 cm)	110 (50 kg)
1MAR1	1	1	Y	60 (227 lpm)	8 1/2 (21.6 cm)	21 1/2 (54.6 cm)	11 (28 cm)	43 (109 cm)	10 (25.4 cm)	N/A	11 7/8 (30.2 cm)	2 (5.1 cm)	123 (55.8 kg)
1MAR2	1	2	Y	120 (454 lpm)	8 1/2 (21.6 cm)	35 (89 cm)	11 (28 cm)	57 (145 cm)	10 (25.4 cm)	N/A	11 7/8 (30.2 cm)	3 (7.6 cm)	138 (62.6 kg)
4MAR2	4	2	Y	480 (1817 lpm)	20 (50.8 cm)	25 (63.5 cm)	20 (50.8 cm)	79 (200 cm)	16 (40.6 cm)	32 (81.3 cm)	20 1/4 (51.4 cm)	6 (15.2 cm)	570 (258.5 kg)
7MAR2	7	2	Y	840 (3179 lpm)	24 (61 cm)	25 (63.5 cm)	20 (50.8 cm)	79 (200 cm)	18 (45.7 cm)	36 (91.4 cm)	24 1/4 (61.6 cm)	6 (15.2 cm)	740 (335.6 kg)
9MAR2	9	2	Y	1080 (4088 lpm)	30 (76.2 cm)	21 (53.3 cm)	24 (61 cm)	84 (213 cm)	21 (53.3 cm)	42 (107 cm)	30 7/8 (78.4 cm)	8 (15.2 cm)	1220 (553.3 kg)

³ - 40" (102 cm) housing specifications are available upon request.

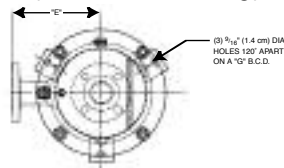
⁵ - Weights listed are for vessels with flange connections.

⁴ - Flow rates listed are for depth cartridges. Consult factory for more specific information.

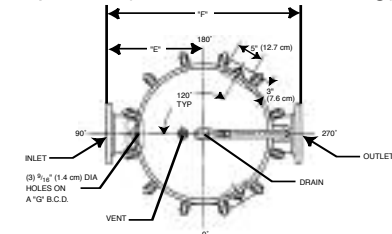
Side View (1-Around Housing)



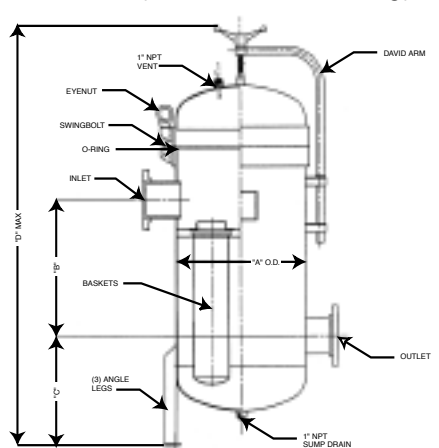
Top View (1-Around Housing)



Top View (Multi-Around Housing)



Side View (Multi-Around Housing)



Part Numbers/Ordering Information

□ MAR □ -316L - □ □ - □ 150 □ (e.g. 1MAR1-316L-2-C150UM)

Code	No. of Marksman Elements
1	1
4	4
7	7
9	9

Code	Cartridge Lengths (nominal)
1	Size 1 Bag
2	Size 2 Bag
4	40" Length

Code	Connection Styles
Blank	NPT
F	Flange

Code	Inlet/Outlet Connection Sizes
2	2"
3	3"
6	6"
8	8"

Code	Code Construction
C	Code Construction
Blank	Non Code Construction

Code	ASME Stamp Designation
UM	UM Stamp
U	U Stamp



Visit us on the Web at www.pall.com

Pall Corporation has offices and plants throughout the world in locations including: Argentina, Australia, Austria, Belgium, Brazil, Canada, China, France, Germany, India, Indonesia, Ireland, Italy, Japan, Korea, Malaysia, Mexico, the Netherlands, New Zealand, Norway, Poland, Puerto Rico, Russia, Singapore, South Africa, Spain, Sweden, Switzerland, Taiwan, Thailand, United Kingdom, United States, and Venezuela. Distributors are located in all major industrial areas of the world.

Filtration. Separation. Solution.SM

© Copyright 2004, Pall Corporation. Pall, Duo-Fine, Marksman and Poly-Fine are trademarks of Pall Corporation. ® Indicates a Pall trademark registered in the USA. Filtration. Separation. Solution.SM is a service mark of Pall Corporation.

Bulletin #1267-1C

6/06



EFC Filtration b.v. | P.O. Box 3034 | 1801 GA Alkmaar | The Netherlands
T +31 (0) 72 540 5454 | efcfiltration.com | info@efcfiltration.com