



Pall Corporation

UR319

UR319 Series Filters
ULTIPLEAT® SRT RETURN LINE FILTERS
Port Size 1½", 2" and 2½"



Features

- Patented Ultipleat (laid-over pleat) filter medium pack
- Coreless, cageless element configuration
- Pall Stress-Resistant Technology (SRT) Media
- In-to-out filter element flow path
- Flows to 760 L/min (200 US gpm)
- Pressures to 41 bar (600 psi)
- Port size 1½", 2" and 2½"

Notes and Specifications

Filter Housing

- **Maximum Working Pressure:**
41 bar (600 psi)
- **Rated Fatigue Pressure:**
41 bar (600 psi)
10⁶ cycles per NFFA T2.06.01R2-2001
- **Typical Burst Pressure:**
145 bar (2100 psi)
- **Temperature Range:**
Fluorocarbon Seals: -29°C to 120°C (-20°F to 250°F)
60°C (140°F) maximum in HWCF or water glycol fluids
Consult sales for other fluid group suitability
- **Materials of Construction:**
Tube: Carbon steel
Head and Cover: Ductile Cast Iron

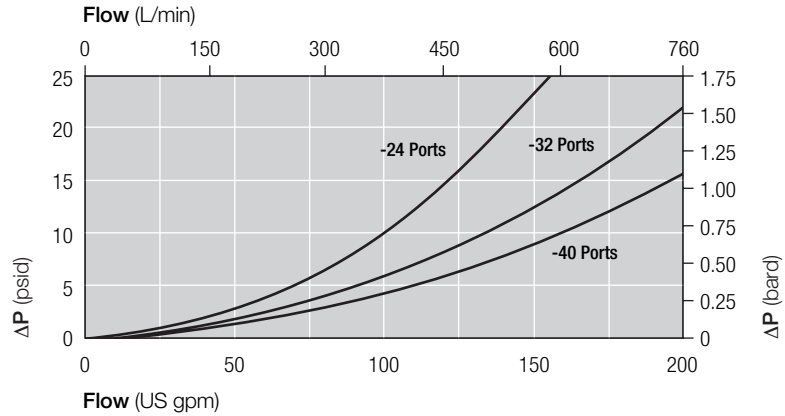
Filter Element

- **Filter Element Burst Pressure:**
10 barg (150 psid)
- **Ultipleat SRT Element Construction:**
Inorganic fibers impregnated and bonded with epoxy resins. Polymer endcaps. Anti-static media design.

Pressure Drop Information

Housing pressure drop using fluid with 0.9 S.G.

Housing pressure drop is directly proportional to specific gravity.



Element Pressure Drop

Multiply actual flow rate times factor in table below to determine pressure drop with fluid at 32 cSt (150 SUS), 0.9 S.G. Correct for other fluids by multiplying new viscosity in cSt/32 (SUS/150) x new S.G./0.9. Note: factors are per 1000 L/min and per 1 US gpm.

319 Series Filter Elements — barg/1000 L/min (psid/US gpm)

| Length Code | AZ | AP | AN | AS | AT |
|-------------|--------------|--------------|--------------|--------------|--------------|
| 08 | 5.52 (0.302) | 2.30 (0.126) | 1.82 (0.100) | 1.32 (0.072) | 0.82 (0.045) |
| 13 | 3.31 (0.182) | 1.38 (0.076) | 1.09 (0.060) | 0.79 (0.043) | 0.49 (0.027) |
| 20 | 2.18 (0.120) | 0.91 (0.050) | 0.72 (0.040) | 0.52 (0.029) | 0.33 (0.018) |
| 40 | 1.10 (0.060) | 0.46 (0.025) | 0.36 (0.020) | 0.26 (0.014) | 0.16 (0.009) |

Sample ΔP calculation

UR319 Series 20" length housing with F24 (1½" SAE) split flange ports using AN grade media. Operating conditions 300 L/min flow rate using a hydraulic fluid of 50 cSt and specific gravity (s.g.) 1.2.

Total Filter ΔP

$$\begin{aligned}
 &= \Delta P_{\text{housing}} + \Delta P_{\text{element}} \\
 &= (0.48 \times 1.2/0.9) \text{ barg (housing)} \\
 &+ ((300 \times 0.72/1000) \times 50/32 \times 1.2/0.9) \text{ barg (element)} \\
 &= 0.64 \text{ barg (housing)} + 0.45 \text{ barg (element)} \\
 &= \mathbf{1.09 \text{ barg (15.8 psid)}}
 \end{aligned}$$

The equipment has been assessed in accordance with the guidelines laid down in The European Pressure Directive 97/23/EC and has been classified within Sound Engineering Practice S.E.P. Suitable for use with Group 2 fluids only. Consult Sales for other fluid gas group suitability.

UR319 Series Filters

Ordering Information

For new installations, select one complete part number from each section below

Section 1

Housing P/N:

Note: Pall Ultipleat SRT filter housings are supplied without filter elements or warning devices fitted. Never operate the filter unless a filter element is fitted and all warning device ports are sealed.

UR 319 ++ Z 9 YR85
 Table 1 Table 2 Table 3 Table 4

Note: Z indicates fluorocarbon seals are standard. Other options are available; contact Pall. The number '9' at the end of the Housing P/N designates 2 indicator ports, one fitted with a plastic shipping plug and the other with a blanking plug.

Seal Kit P/N:

UR 219 SKZ

*Other seal material options are available; Contact Pall.

Table 1: Housing Orientation Options

| Code | Port |
|------|--------------------------|
| C | Cap service (tube up) |
| H | Head service (tube down) |

Table 2: Housing Port Options

| Code | Port |
|------|---|
| A24 | 1½" SAE J514 straight thread |
| D24 | 1½" Flange J518C code 61 with ½"-13 UNC holding bolts |
| A32 | 2" SAE J514 straight thread |
| D32 | 2" Flange J518C code 61 with ½"-13 UNC holding bolts |
| D40 | 2½" Flange J518C code 61 with ½"-13 UNC holding bolts |
| C24 | 1½" BSP ISO 228 threads |
| F24 | 1½" ISO 6162 split flange with M12 x 1.75 holding bolts |
| C32 | 2" BSP ISO 228 threads |
| F32 | 2" ISO 6162 split flange with M12 x 1.75 holding bolts |
| F40 | 2½" ISO 6162 split flange with M12 x 1.75 holding bolts |

Table 3: Housing Length Options

| Code | Length (in)* |
|------|--------------|
| 08 | 8 |
| 13 | 13 |
| 20 | 20 |
| 40 | 40 |

* Nominal length

Table 4: Housing Bypass Valve Options

| Code | Valve |
|------|---|
| A | 1.7 bard - 25 psid Use 084 code indicator only |
| G | 4.5 bard - 65 psid Use 091 code indicator only |
| N | Non-Bypass Use 091 code indicator only |

Section 2

Element P/N:

UE 319 Z
 Table 1 Table 2

Note: Z indicates fluorocarbon seals are standard. Other options are available; contact Pall.

Table 1: Filter Element Options

| Code | $\beta_{x(c)} \geq 1000$ based on ISO 16889 | CST Rating* |
|------|--|-------------|
| AZ | 3 | 08/04/01 |
| AP | 5 | 12/07/02 |
| AN | 7 | 15/11/04 |
| AS | 12 | 16/13/04 |
| AT | 22 | 17/15/08 |

* CST: Cyclic Stabilization Test to determine filter rating under stress conditions, based on SAE ARP4205

Table 2: Filter Element Length Options

| Code | Length (in)* |
|------|--------------|
| 08 | 8 |
| 13 | 13 |
| 20 | 20 |
| 40 | 40 |

* Nominal length

Section 3 (At least one Differential Pressure Indicator or 'B' type blanking plug must be ordered)

Differential Pressure Indicator P/N:

Note: Two Differential Pressure Indicators can be fitted on this housing

RC Z
 Table 1 Table 2 Table 3 Table 4

Note: If no differential pressure indicator is selected, 'B' type blanking plug (P/N HC9000A104Z) must be ordered separately and fitted to replace the plastic shipping plug.

Note: Z indicates fluorocarbon seals are standard. Other options are available; contact Pall.

Table 1: Differential Pressure Indicator Options*

| Code | Indicator | 'H' Dim. |
|-------|--|---------------|
| 778NZ | 'P' type Visual indicator with thermal lockout | 21mm (0.83in) |
| 860MZ | 'D' type Visual indicator with no thermal lockout | 21mm (0.83in) |
| 861CZ | 'L' type Electrical switch (SPDT) with 6" leads | 38mm (1.50in) |
| 861CZ | 'M' type Electrical switch (SPDT) with DIN43650 connector and matching cap | 78mm (3.07in) |
| 861CZ | 'R' type Electrical switch (SPDT) and neon light indicator with DIN43650 connector and cap | 89mm (3.50in) |
| 771BZ | 'S' type Electrical switch (SPDT) with 3-pin MS connector | 57mm (2.24in) |

* Other options available on application.

Table 2: Indicator Pressure Setting Option*

| Code | Valve |
|------|---|
| 084 | For 'A' Valve Option - Housings (1.1 bard - 16 psid) |
| 091 | For 'G' and 'N' Valve Options - Housings (3.5 bard - 50 psid) |

* Other setting options are available; contact Pall.

Table 3: 'M' & 'R'-Type Indicator Codes*

| Code | Option |
|------|------------|
| YM | 'M' option |
| YR | 'R' option |

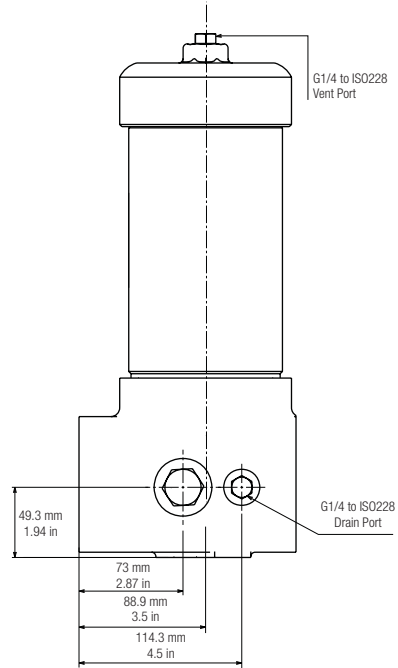
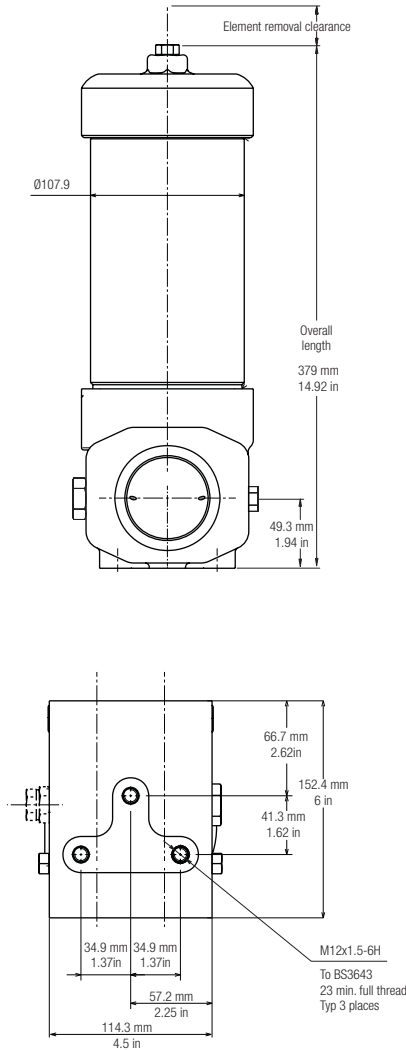
* Use only if 'R' or 'M' Indicator is selected from Table 1

Table 4: 'R' Indicator Options

| Code | Option |
|-------|---------|
| 110AC | 110V AC |
| 220AC | 220V AC |
| 24DC | 24V DC |

* Use only if 'R' Indicator is selected from Table 1

('C' option housing shown)



| Length Code | 'C' Option Overall Length mm (in) | 'H' Option Overall Length mm (in) | 'C' Option Element Removal Clearance mm (in) | 'H' Option Element Removal Clearance mm (in) | Empty Weight kg (lb) |
|-------------|-----------------------------------|-----------------------------------|--|--|----------------------|
| 08 | 424 (16.69) | 437 (17.22) | 230 (9) | 100 (3.9) | 18 (40) |
| 13 | 559 (21.99) | 572 (22.52) | 370 (14.5) | 100 (3.9) | 21 (46) |
| 20 | 729 (28.69) | 742 (29.22) | 530 (21) | 100 (3.9) | 23 (51) |
| 40 | 1237 (48.69) | 1250 (49.22) | 1040 (41) | 100 (3.9) | 30 (66) |



Visit us on the web at www.pall.com

Pall Corporation has offices and plants throughout the world in locations including: Argentina, Australia, Austria, Belgium, Brazil, Canada, China, France, Germany, India, Indonesia, Ireland, Italy, Japan, Korea, Malaysia, Mexico, the Netherlands, New Zealand, Norway, Poland, Puerto Rico, Russia, Singapore, South Africa, Spain, Sweden, Switzerland, Taiwan, Thailand, United Arab Emirates, United Kingdom, United States, and Venezuela. Distributors are located in all major industrial areas of the world.

Because of developments in technology these data or procedures may be subject to change. Consequently we advise users to review their continuing validity annually. Part numbers quoted above are protected by the Copyright of Pall Europe Limited.

PALL, Pall and Ultipleat are trade marks of Pall Corporation.
 Filtration. Separation. Solution is a service mark of Pall Corporation.
 © indicates a trademark registered in the USA.
 © Copyright 2008, Pall Corporation.

Filtration. Separation. Solution.sm

January 2008. Printed in England. IMUR319ENa